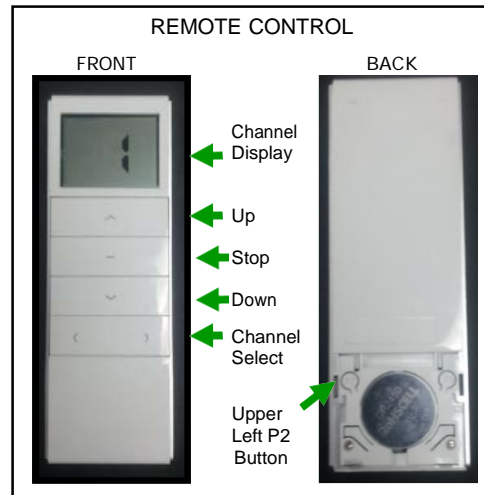


NORMAN®

2016 15 Channel Remote Programming: For the (35R Motor with or without a Plug) LEFT SIDE AND RIGHT SIDE MOTORS

Right Side Worms



Left Side Worms



Note: All Roller Shades should be programmed before the top treatment is attached.

- *The 35R AC Motor does not have a Middle Limit Option.
- *The 35R AC Motor is the default motor for all Roller Shades over 96" in Width.
- *The 35R AC Motor Up and Down Limits are set mechanically, not with the remote.

To Reverse the Shade direction: Unplug the shade and then plug it in and follow the pairing commands below.

Roller Shade Motorization Programming:

Step A/R: RIGHT SIDE MOTOR / PAIR REMOTE WITH THE SHADE:

- | | |
|---|---|
| Plug in the motor
P2 / beep
P2 / beep
Press Down / beep
Press Down again
Shade goes down
Press Stop | <ol style="list-style-type: none">1. Choose the channel on the remote that you would like to pair the shade with.2. Power Up / Connect the Motor.3. Press the P2 BUTTON once. (The motor will Beep.)4. Press the P2 BUTTON once. (The motor will Beep.)5. Press the DOWN BUTTON ON THE REMOTE. (The motor will Beep.)6. Press Down again.7. The Shade goes Down.8. Press Stop.9. The shade is paired with the Remote. |
|---|---|

Step A/L: LEFT SIDE MOTOR / PAIR REMOTE WITH THE SHADE:

- | | |
|---|--|
| Plug in the motor
P2 / beep
P2 / beep
Press UP / beep
Press Down
Shade goes down
Press Stop | <ol style="list-style-type: none">1. Choose the channel on the remote that you would like to pair the shade with.2. Power Up / Connect the Motor.3. Press the P2 BUTTON once. (The motor will Beep.)4. Press the P2 BUTTON once. (The motor will Beep.)5. Press the UP BUTTON ON THE REMOTE. (The motor will Beep.)6. Press the DOWN BUTTON.7. The Shade goes Down.8. Press Stop.9. The shade is paired with the Remote. |
|---|--|

Step B: SETTING THE UP AND DOWN LIMITS:

Once the Shade and Remote are paired, move the shade to the Up and Down Limits using the up and down keys on the Remote to check the limits. If they need adjusting, use the instructions below to adjust the Up and Down Limits.

RIGHT SIDE MOTOR SETTING THE UP LIMIT (USE THE RED WORM)

TO RAISE THE UP LIMIT:

Turn the Red Worm Counter-Clockwise with the adjustment tool provided. >>>>>>>>>>>>>>>>>>>>>>
The shade will Jog Up with each turn. Continue turning Counter-Clockwise until the desired Up Limit is achieved.

TO LOWER THE UP LIMIT:

Turn the Red Worm Clockwise with the adjustment tool provided. >>>>>>>>>>>>>>>>>>>>>>
Turn the Red Worm one or two turns Clockwise.
Press Down. Run the shade Down 1/3 the length. Then press UP.
The shade will move up to the new Up Limit.
Repeat this process until the desired Up Limit is achieved.



NORMAN®

HOW TO ENTER OR EXIT DOT MODE:

To Enter Dot Mode:

- | | | |
|-----------|---------------|----------------------|
| P2 / Beep | 1. Press P2 – | The shade will Beep. |
| UP / Beep | 2. Press UP – | The shade will Beep. |
| P2 / Beep | 3. Press P2 – | The shade will Beep. |

To Exit Dot Mode:

- | | |
|---------------|----------------------|
| 1. Press P2 – | The shade will Beep. |
| 2. Press UP – | The shade will Beep. |
| 3. Press P2 – | The shade will Beep. |

*Press and Hold the UP or DOWN key for STANDARD movement while in DOT Mode.

The Up and Down Limits will not be lost Entering or Existing Dot Mode

HOW TO COPY THE PROGRAMMING FROM ONE CHANNEL TO ANOTHER CHANNEL ON THE SAME REMOTE:

HOW TO COPY THE PROGRAMMING FROM ONE CHANNEL TO ANOTHER CHANNEL ON THE SAME REMOTE:

Example: How to Copy a Shade on Channel 1 to Channel 2 on the same remote.

P2 / Jog
P2 / Jog
Switch Channel
P2 / Jog

1. Switch the Remote to the channel to be copied.
2. Press the P2 button on the back of the REMOTE ONCE / the shade will jog once.
3. Press the P2 button on the back of the REMOTE ONCE / the shade will jog once.
4. Switch the Remote to the channel you want to copy programming to.
5. Press the P2 button on the back of the REMOTE ONCE / the shade will jog once
6. The programming is now copied to the new channel.

HOW TO DELETE A COPIED CHANNEL ON THE SAME REMOTE:

Example: How to remove a Shade on Channel 1 from Channel 2 on the same remote.

1. Unplug the Motor for 1 minute.
2. Follow Step A/R or A/L. Pair the Remote and Motor back to Channel 1.
3. Follow Step B. Set the Limits for the Shade.
4. Confirm Channel is Deleted: switch Remote to Channel 2 and operate the Shade. The Shade on Channel 1 should not move.

SPECIAL STEP: TO COPY ONE REMOTE (A) TO A SECOND REMOTE (B):

Example: How to copy a Shade on Remote A, Channel 1 to Remote B, Channel 8.

This step must be repeated for each channel you want to copy from Remote A to Remote B

P2 A Remote / Jog &
Beep
P2 A Remote / Jog

1. Press the UPPER LEFT P2 BUTTON ON THE BACK OF THE REMOTE (A) – the shade will Beep & Jog once.
2. Press the UPPER LEFT P2 BUTTON ON THE BACK OF THE REMOTE (A) – the shade will Beep once.
3. Press the UPPER LEFT P2 BUTTON ON THE BACK OF THE REMOTE (B) – the shade will Beep once.
4. The programming from remote (A) is now copied to remote (B)
5. This **Step** also copies the ALL BUTTON from Remote A to Remote B.
6. **Do not Copy Remotes if you DO NOT want the ALL BUTTON (0) on both remotes to move all shades.**

HOW TO DELETE A COPIED CHANNEL ON A DIFFERENT REMOTE:

This step must be repeated for each channel you want to delete from Remote B

Example: How to remove a Shade on Remote A, Channel 1 from Remote B, Channel 8.

1. Unplug the Motor for 1 minute.
2. Start at Step A/R or A/L. Pair the Remote and Motor back to Channel 1.
3. Follow Step B. Set the Limits for the Shade.
4. Confirm the Channel is Deleted: switch to Remote B, Channel 8 and attempt to operate the Shade. The shade should not move.

SPECIAL NOTE:

SHADES CAN BE CONTROLLED BY MULTIPLE REMOTES BY USING THE COPY FEATURE.

NORMAN®

UNLOCKING THE 15 CHANNEL REMOTE:

In rare cases you may receive a 15 Channel remote that will not display all 15 channels. If you receive one of these Locked Remotes, use the directions below to "Unlock the Remote" and restore all 15 channels.

Press and Hold the Left arrow key (P1+) and the Right arrow key (P1-) at the same time until a C appears in the display screen



Continue to press the Left and Right arrow keys until the display changes to 15. Release the Left and Right arrow keys



Press the Stop button once and a zero will appear in the display and then change to 15. The remote is now unlocked and you may proceed with programming.

